



Broad Brook & White Brook Sedimentation Basins Dredging Project

FUNDED BY

Easthampton Community Preservation Act Committee & Nashawannuck Pond Steering Committee

MAYOR

Nicole LaChapelle

PROJECT ENGINEER

GZA GeoEnvironmental, Inc.
Springfield, MA
GZA.com

CONTRACTOR

Luciano's Excavation Inc.
Taunton, MA
lucianoexcavationinc.com

ADMINISTERED BY

City of Easthampton
Planning Department &
Department of Public Works

MORE INFORMATION

easthamptonma.gov/planning

CONTACT

Assistant Planner Jamie Webb
jwebb@easthamptonma.gov

ABOUT

The Broad Brook and White Brook sedimentation basins are located on two of the three main tributaries into Nashawannuck Pond. The sediment basins were built in 1992 and 1996 and were designed to trap naturally occurring sediments (e.g. sand, silt, soil, etc.) before it enters the pond. **Without these sedimentation basins, Nashawannuck Pond would continually shrink in size as every rainstorm carries sediment into the pond from upstream sources.**

Both basins have functioned as intended and are now full. **The accumulated sediment will be removed so that the basins can continue to function into the future and continue to preserve the water quality and size of the pond.** This project will dredge approximately 1,500 cubic yards of material from these basins and transport it for storage at the reuse site off River Valley Way.

Once the dredging work begins, some trails in the vicinity will be closed until after restoration work is completed. **Please respect trail closures for your safety and the safety of the workers.**

TIMELINE

White Brook

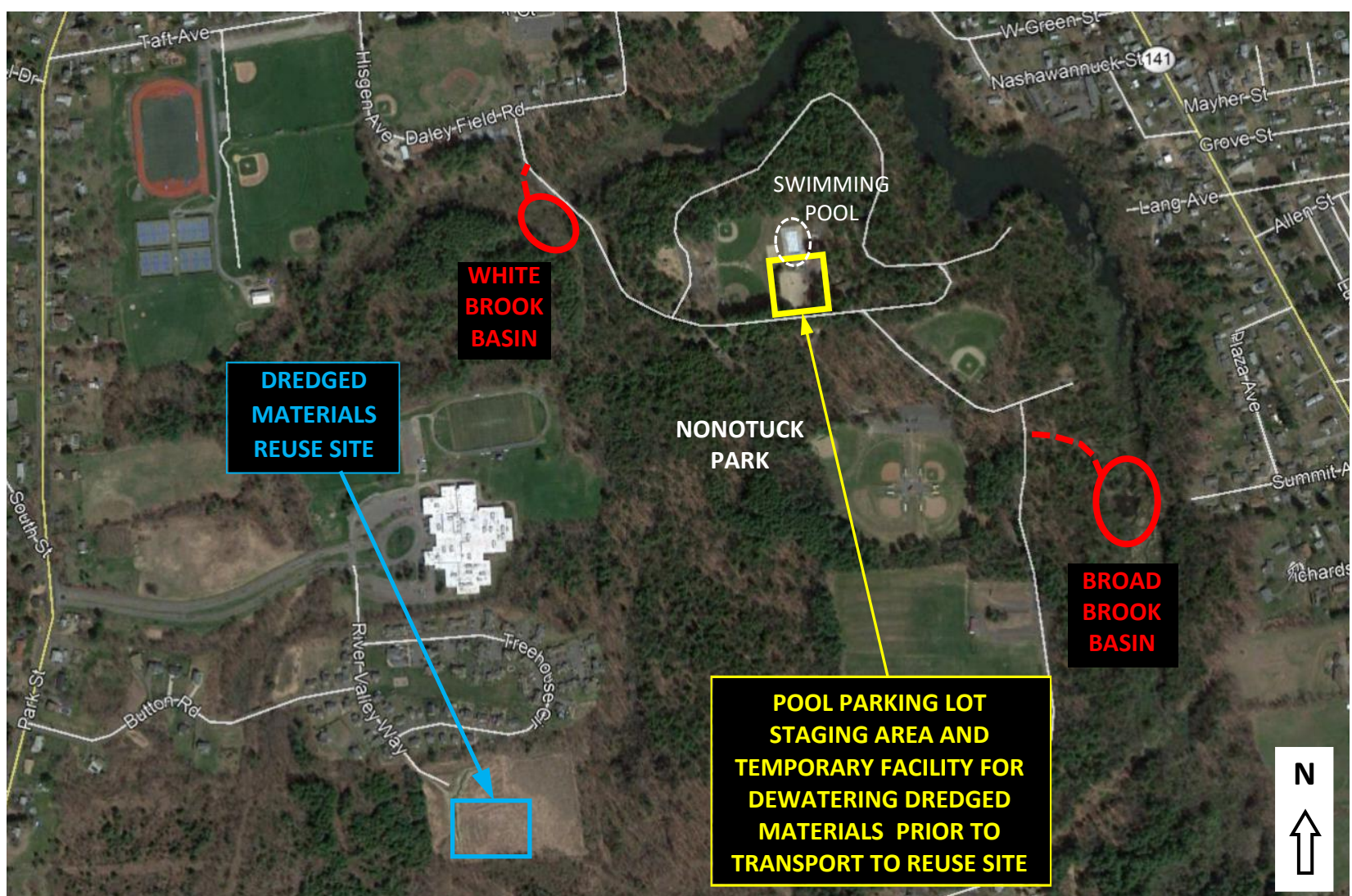
mobilization & dredging 10/ 5 – 10/15/2020
site restoration 11/10 – 11/17/2020

Broad Brook

mobilization & dredging 10/13 – 10/30/2020
site restoration 11/10 – 11/17/2020

Sediment Reuse Site

mobilization & transport 10/29 – 11/ 9 /2020
site restoration 11/10 – 11/17/2020



PROJECT SITE LOCATIONS

WHITE BROOK AND BROAD BROOK SEDIMENTATION BASINS DREDGING PROJECT